

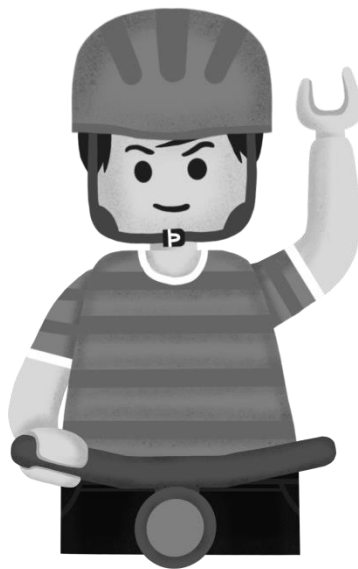
# Match the Signals

Draw a line to match the signals to their meanings.

Left Turn



Stop



Right Turn

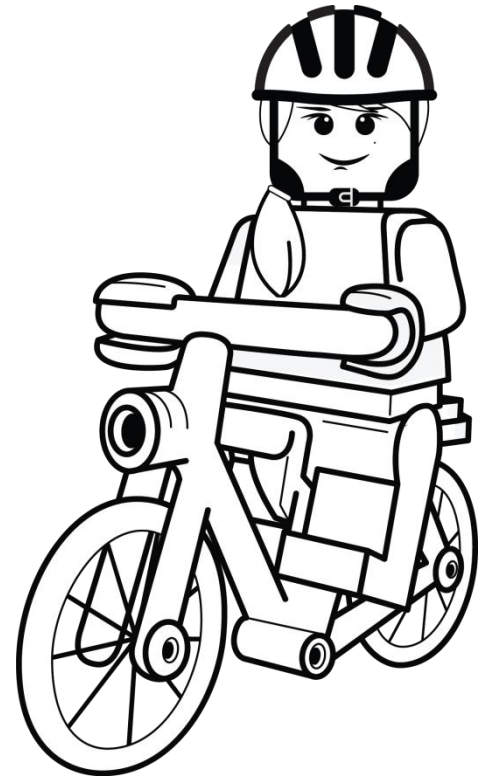
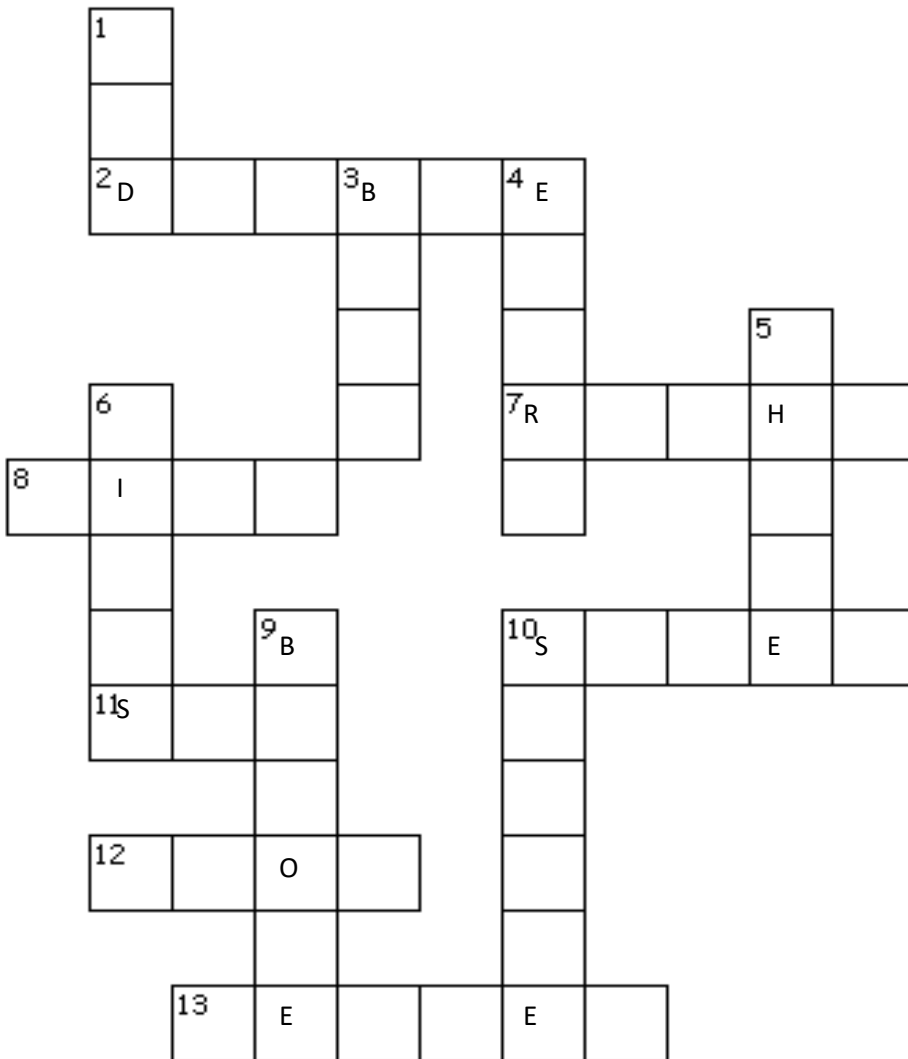


**Answer:**  
Left arm bent upwards for a right turn. Left arm straight out for a left turn. Left arm bent downwards for a stop.

## Obey the Rules of the Road

Always use the correct signals for turning left and right and stopping.  
Never turn or swerve your bike without looking behind you first.

# Crossword



## Across

2. Never ride \_\_\_\_\_
7. Ride on the \_\_\_\_\_ hand side of the road
8. Always ride \_\_\_\_\_ traffic
10. Wear \_\_\_\_\_ when riding a bike, no bare feet or flip flops
11. Wear bright clothes so drivers can \_\_\_\_\_ you
12. Use signals for turning left and right and to \_\_\_\_\_
13. A \_\_\_\_\_ protects your head from injury

## Down

1. When riding at night have a \_\_\_\_\_ rear reflector
3. Use a \_\_\_\_\_ to warn pedestrians you are there
4. Wear a helmet on \_\_\_\_\_ ride
5. When riding after dark, you need a \_\_\_\_\_ light on the front of your bicycle
6. Obey all traffic lights and \_\_\_\_\_
9. Look for traffic \_\_\_\_\_ riding out onto the street

# Helmet Fit

## To properly fit your helmet:

Place the helmet squarely on top of your head.

It should fit snugly; add or remove the padding to get a snug fit.

Always do up the chin strap and follow the three simple tests below every time you ride.



**2 fingers above your eyebrow**



**V shape or a peace sign around your ear**



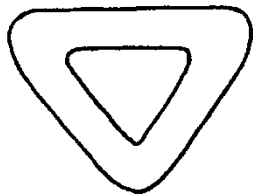
**1 finger between the strap and your chin**

Design your own helmet.

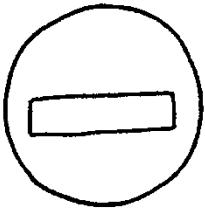
# Safety Signs

Before you ride your bike on the street, learn what the traffic signs mean.

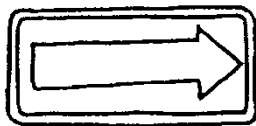
*Match the signs to their meanings and colour them the right colour.*



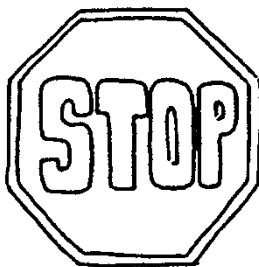
**Stop**



**One Way**



**Yield**



**Do Not Enter**



Answers  
Car door, sewer, ball, pedestrian, hole in street, train, car